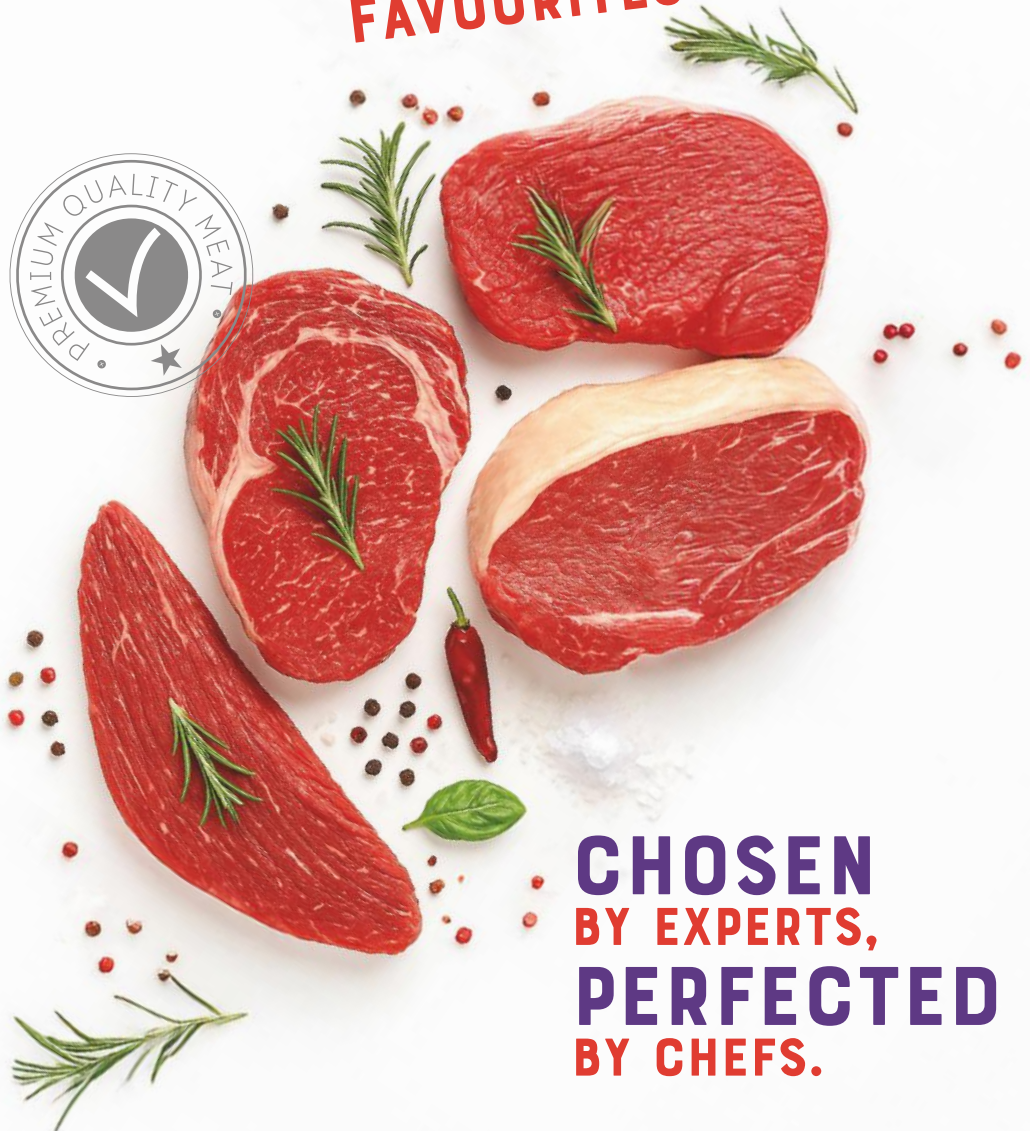




BUTCH[®]

FAVOURITES



CHOSEN
BY EXPERTS,
PERFECTED
BY CHEFS.

The butcher's choice for tender, affordable meat



Butch Favourites is our **value-focused meat line**, the butcher's favourite for consistent tenderness at an accessible price point. Designed especially for high-volume kitchens, foodservice, and price-conscious retail, **this tenderized beef range offers excellent usability without compromising on eating quality.**

Through careful processing, Butch Favourites **guarantees tenderness** and makes it ideal for a wide variety of dishes where texture, cost-efficiency, and reliability matter most. Portioned for your convenience, always tender.

Looking for tender beef at **competitive pricing**?
Butch Favourite delivers.



Rib Eye



Steak



Striploin



Tournedo



Burger/ blast



Bavette



Picanha/ Steak



Tenderloin cubes



For price information and packing, please contact us.



LODEWIJKS
QUALITY MEAT

WWW.LODEWIJKSMEAT.COM

Het Wargaren 33 | 5397 GN Lith | The Netherlands
T +31 411 785 005

Victor Brito

+31 (0)6-38642362 | victor@lodewijksmeat.com

Rick ter Reehorst

+31 (0)6-10311953 | rick@lodewijksmeat.com

Paul Josiassen

+31 (0)6-46001146 | paul@lodewijksmeat.com

Rob van Kempen

+31 (0)6-52616079 | rob@lodewijksmeat.com